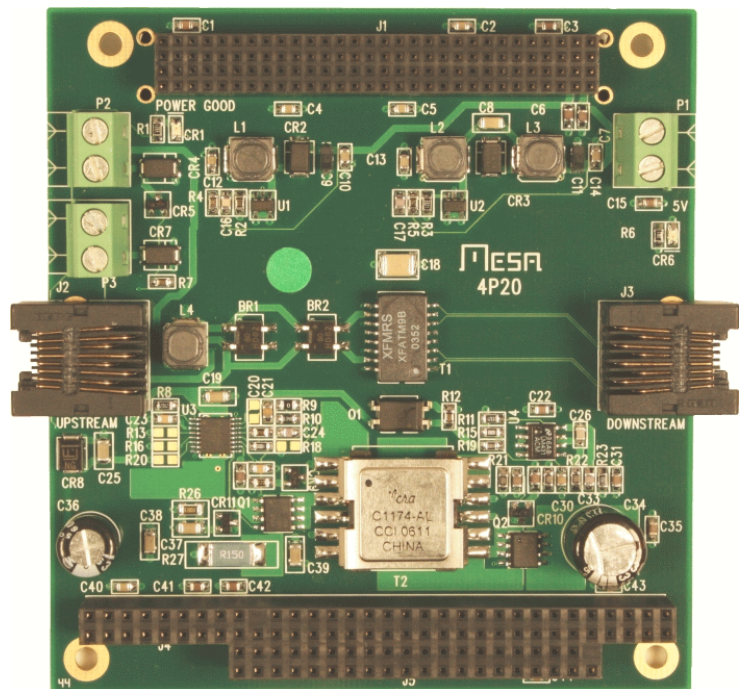




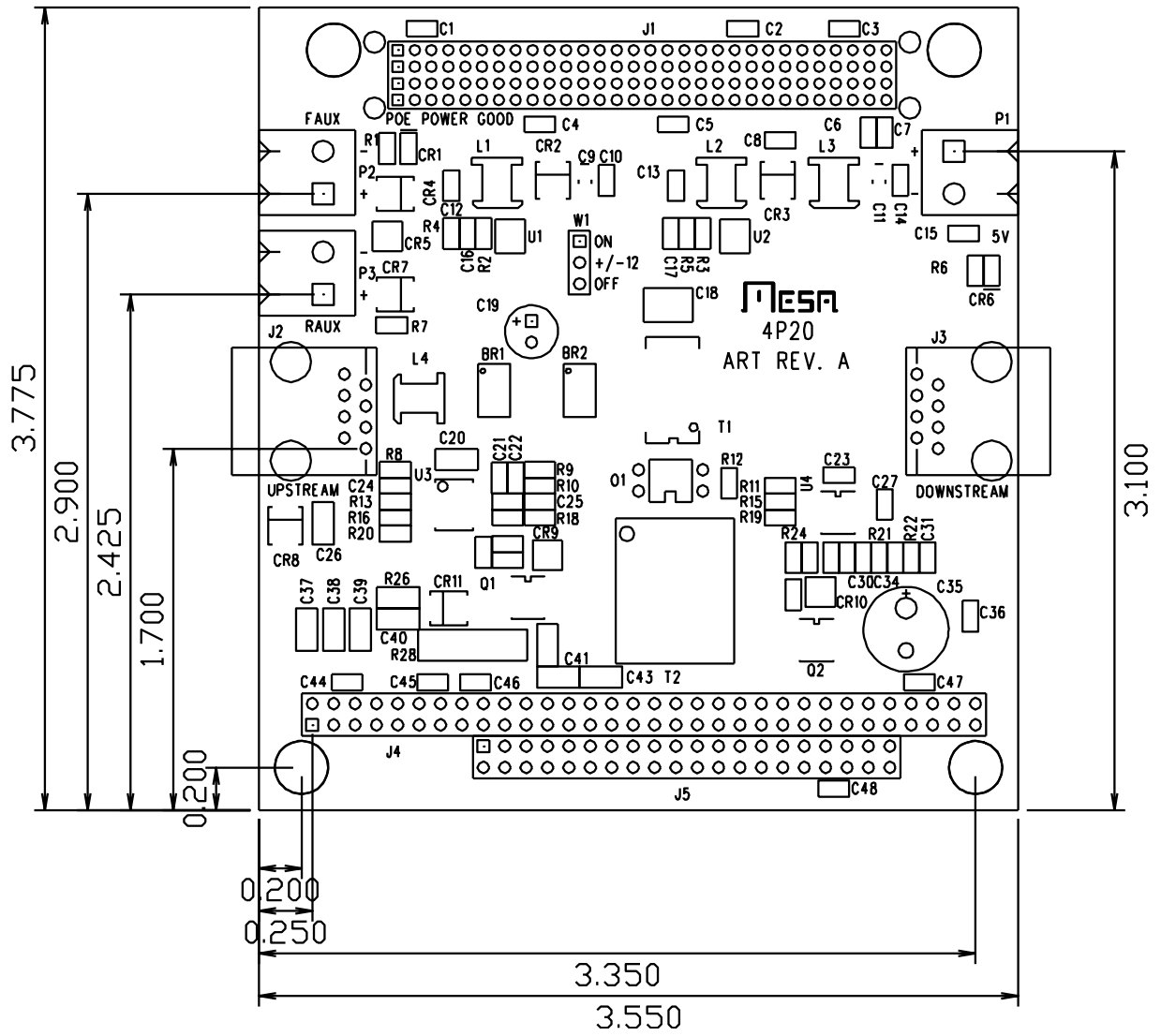
4P20 PC/104-PLUS POE POWER SUPPLY

- 10/100 BT Feedthrough POE
- 11W output power
- Aux input 18 to 60VDC
- +12 @ 200mA, -12 @ 100 mA
- 5V @ 2A max
- Efficient Sync Rect on 5V out
- Electrical isolation between POE/AUX and outputs
- Stackable PC/104-PLUS card
- Made in USA - local support
- 2 year warranty



The 4P20 is a Power-Over-Ethernet power supply that allows remote operation of low power PC/104-PLUS stacks. The 4P20 provides a feed-through POE tap so that the remote system can get power and Ethernet communication from a single CAT5 cable up to 100 meters long. The 4P20 supplies 5V and limited amounts of +/- 12V power to the stack. +/- 12 Volt outputs can be disabled if not required.

An auxiliary power input can be used if POE is not available, or for battery backup / failover type applications. Output power is isolated from POE and AUX power. Power connectors compatible with pluggable screw terminals are provided for the AUX and +5V power. +5V and +/- 12V are wired to the PC/104 and PC/104 PCI connectors.



ORDERING INFORMATION:

- 4P20 11W POE PC/104-PLUS POWER SUPPLY - COMMERCIAL TEMP RANGE
- 4P20-I 11W POE PC/104-PLUS POWER SUPPLY - INDUSTRIAL TEMP RANGE