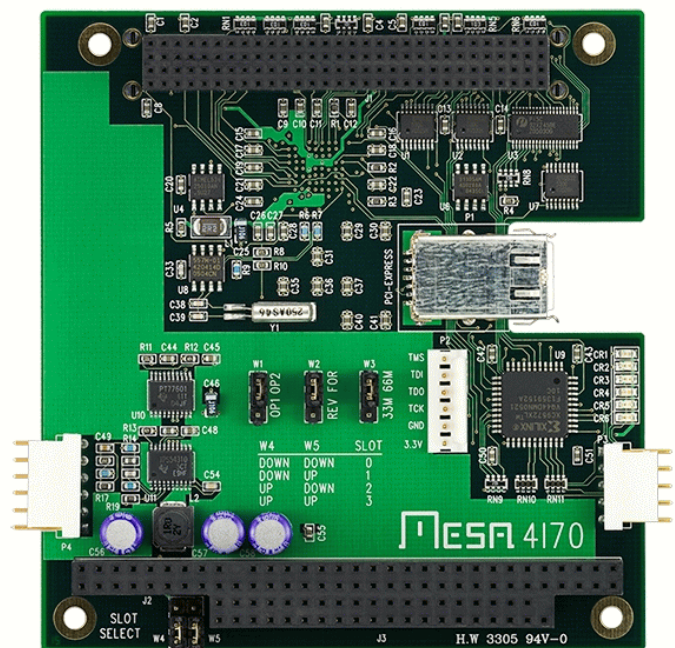




## 4I70 REMOTE PC104-PCI BRIDGE

- **Cabled bridge with up to 30 feet Between remote and host ends**
- **Uses standard Infiniband cables.**
- **Same card can be forward or reverse bridge.**
- **In forward mode, supplies 3.3V to stack.**
- **33 or 66 MHz PCI bus.**
- **4 GPIO bits available.**
- **Stackable PC/104-PLUS card.**
- **Made in USA - local support.**
- **2 year warranty.**



The 4I70 is a PC104-PCI remote cabled bridge. It allows expansion of PC/104-PCI systems via a serial data cable up to 30 feet long. The 4I70 appears to the system to be a standard PCI bridge so no special software or drivers are required for use. The 4I70 can be jumpered for forward (cable to PCI master) or reverse (PCI slave to cable) mode. When in forward mode, the 4I70 replaces the CPU in a PC/104-PCI stack, supporting up to 4 bus master peripheral cards.

In forward mode the 4I70 can supply 2.5A of 3.3V power to the stack, so only a single 5V supply is needed to power the remote stack.

In reverse mode, the 4I70 uses a single PC/104-PCI bus master slot, and requires only 5V for operation.

The 4I70 is compatible with the 5I70 (PCI), and 6I70 (PCI Express) cards, allowing a desktop PC to control a remote PC/104-PCI stack.

The 4I70 can be used for testing, dealing with embedded system mechanical constraints, expanding PC/104-PCI systems, connecting desktop system to embedded stacks, allowing Wireless and A-D cards to be placed in ideal locations.

