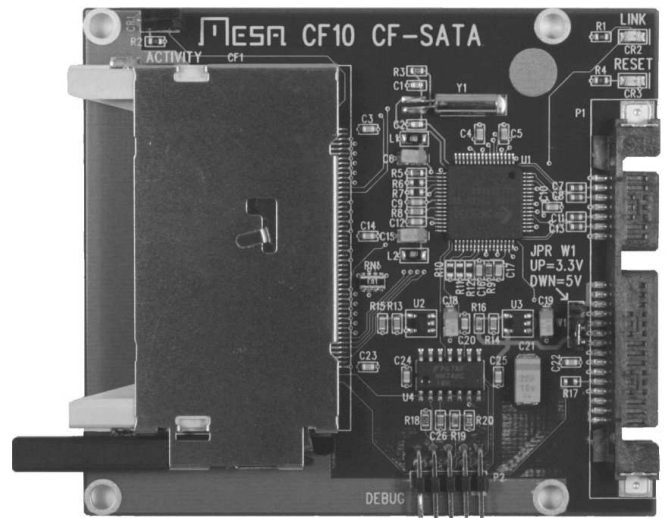




## CFADPT10 SATA COMPACT FLASH ADAPTER

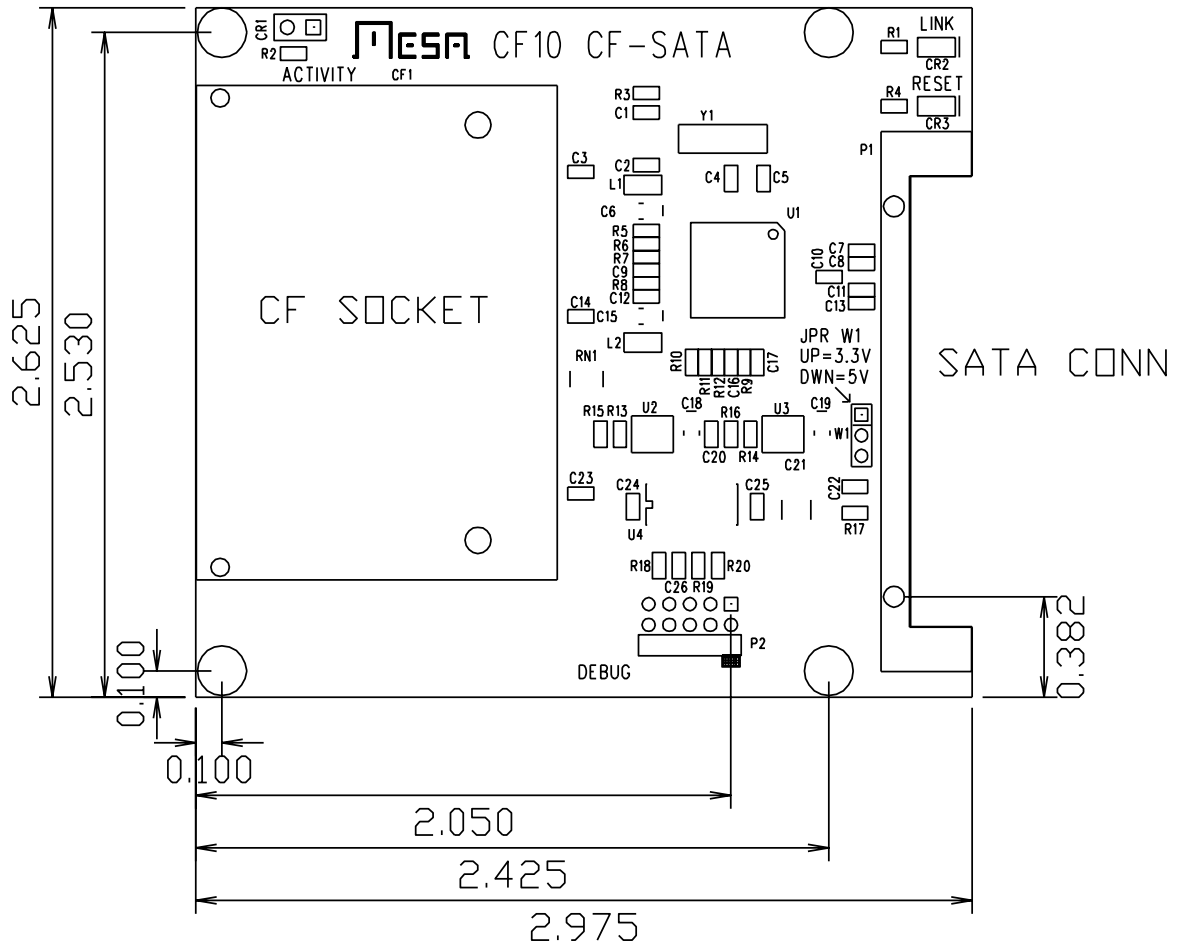
- **SATA to CF adapter**
- **2.5" SATA drive form factor**
- **Built in push button card ejector**
- **LED activity indicator**
- **Quiet 4 layer PCB**
- **Supports DMA capable CF cards to UltraDMA 150**
- **SATA and CF hot swap**
- **3.3V or 5V power**
- **SATA power connector**
- **Made in USA - local support**
- **2 year warranty**



The CFADPT10 is a SATA to Compact Flash adapter on a small PCB. The form factor matches a 2.5" SATA hard drive.

The CFADPT10 supports both PIO mode (0 through 4) and DMA capable CF cards up to Ultra DMA150.

CF Card removal resets the SATA controller, allowing hot swap of CF cards. The CFADPT10 also supports SATA hot swap. The CFADPT10 uses a single 5V or 3.3V power supply from the host system. CF card activity, SATA link status and Reset LEDs are provided.



**ORDERING INFORMATION:**

CFADPT10      SATA -- COMPACT FLASH ADAPTER