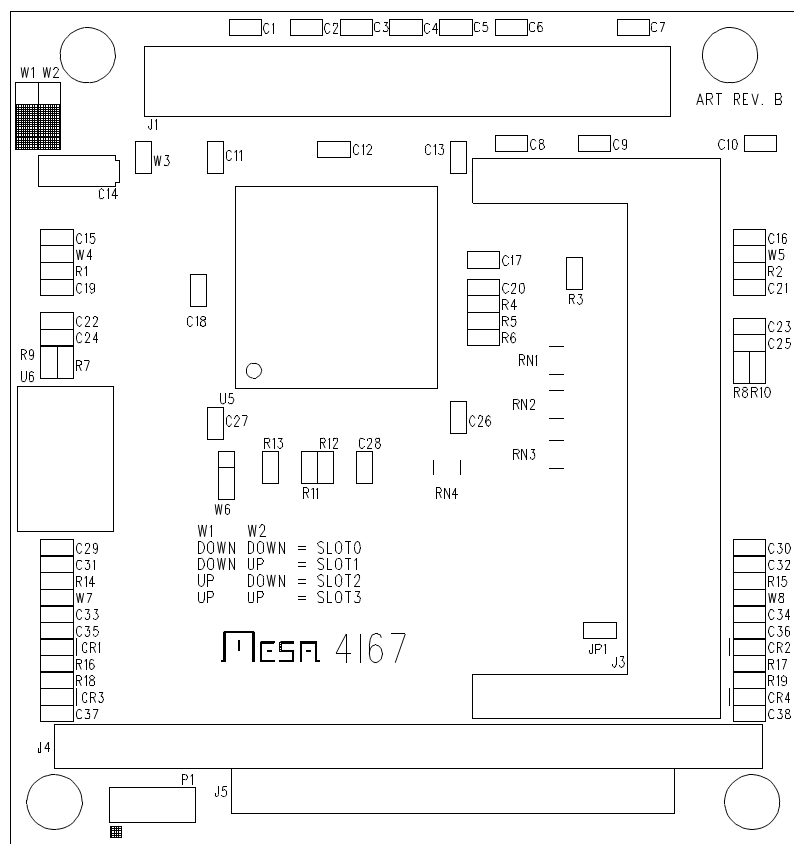


MESA 4167 INFO SHEET



The 4167 is a PC/104-PLUS to dual Mini-PCI III adapter. The 4167 allows two Mini PCI type III cards to be connected to a PC/104-PLUS system. Since the 4167 uses a PCI-PCI bridge, it only uses one PC/104-PLUS slot.

SETUP:

There are only 2 option jumpers on the 4I67, W1 and W2. These select the PC/104-PLUS "SLOT" number that the 4I67 occupies.

W1	W2	PC/104-PLUS SLOT
DOWN	DOWN	0
DOWN	UP	1
UP	DOWN	2
UP	UP	3 (Only newer CPUs support slot 3)

The 4I67 has two independent local 3.3V power regulators (U6,U7), one for each Mini-PCI card. Maximum current supplied by the regulator is 1A per Mini-PCI card.

The 4I67 has 4 status LEDS and a connector (P1) to allow remote LEDS to be connected. P1 is a 10 pin 2mm connector. P1 pin-out is as follows:

PIN

1	Green0+
2	Green0-
3	Yellow0+
4	Yellow0-
5	Green1+
6	Green1-
7	Yellow1+
8	Yellow1-
9	GND
10	3.3V

External LEDS connected to P1 must have series current limiting resistors.

INTERRUPT ROUTING:

The 4167 follows the PCI standard for routing of interrupts across PCI bridges:

Mini-PCI slot 0 (top of card) interrupt routing:

PC/104-PLUS SLOT#	PRIMARY	SECONDARY
0	INTA	INTB
1	INTB	INTC
2	INTC	INTD
3	INTD	INTA

Mini-PCI slot 1 (bottom of card) interrupt routing:

PC/104-PLUS SLOT#	PRIMARY	SECONDARY
0	INTB	INTC
1	INTC	INTD
2	INTD	INTA
3	INTA	INTB

Note that the secondary interrupt is only used on MiniPCI cards with multiple PCI functions per card.